

Walney Extension offshore wind farm

Meeting with National Infrastructure Directorate
Bristol

30th October 2012



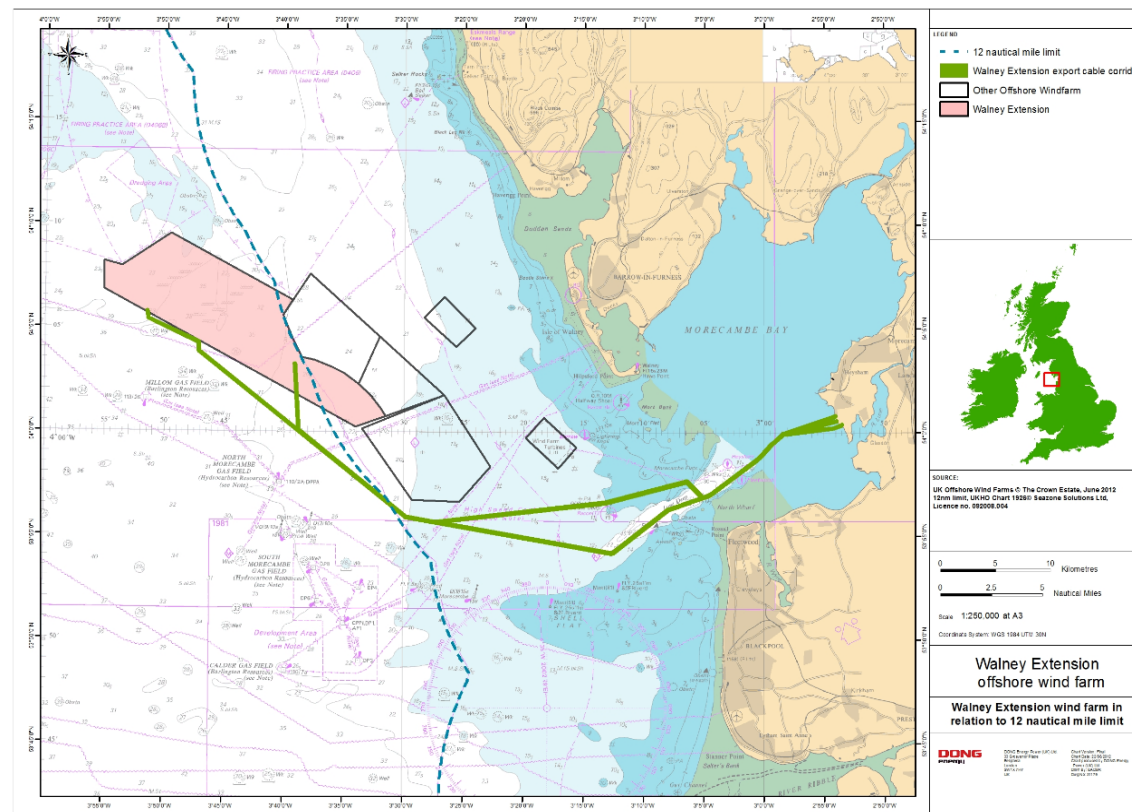
Walney Extension – Overview

The Walney Extension Site was awarded to DONG Energy in April 2010 by The Crown Estate

- ❑ Total Area: 149 km²
- ❑ Capacity: 750MW (indicative)
- ❑ Turbines range: 3.6, 6, 7, 7.5 MW
- ❑ One offshore cable route now being considered, which has two options for part of its length.

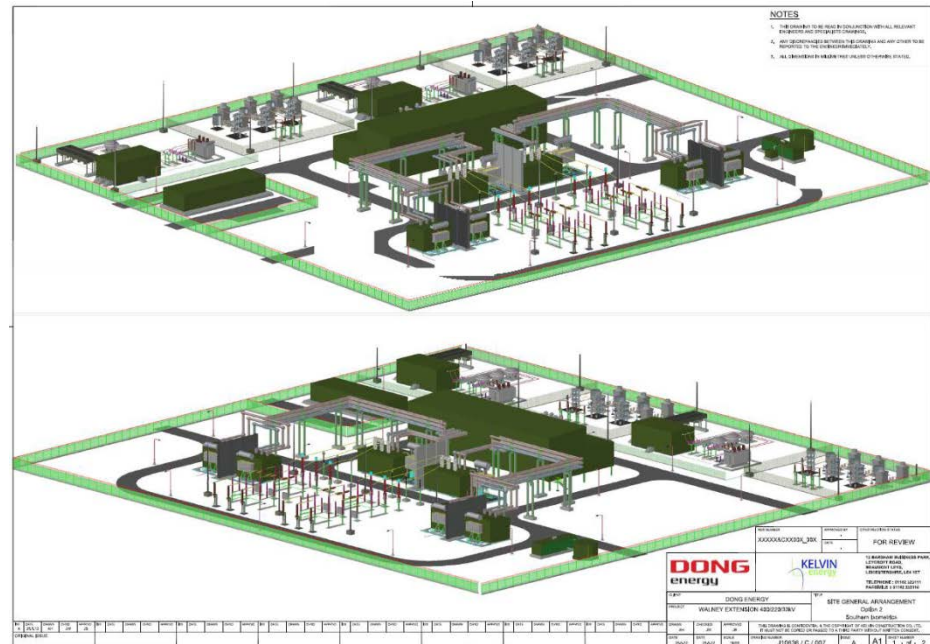
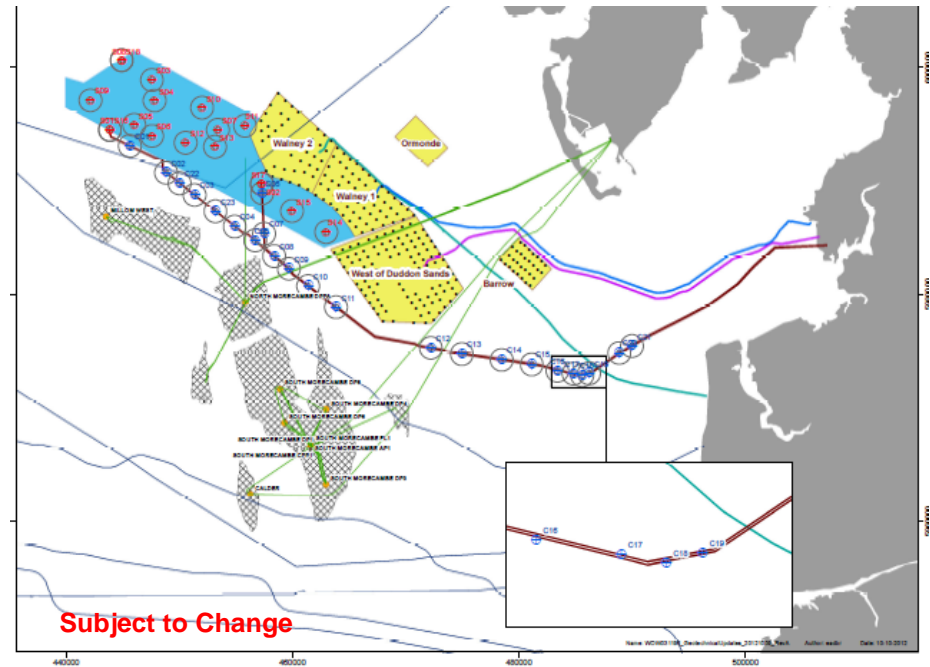
Grid Connection Agreement from the National Grid:

- ❑ Signed November 2011
- ❑ Interface substation: National Grid 400 kV substation in Heysham
- ❑ Potential Landfall options at Heysham
- ❑ Substation land option now finalised



Walney Extension – Project Update

- Onshore Cable Route options signed
- Onshore Substation land signed
- Geotech 01 campaign currently underway (completed Mid November)
- Additional landfall option have been identified and consulted.
- Commercial discussions continue with other stakeholders in the area and agreements are progressing.
- PPA due to be signed with interested Local Authorities
- EIA work is on going and due for completion early 2013



Walney Extension – Irish Sea Cumulative Regional Assessment

- **Shipping and Navigation**

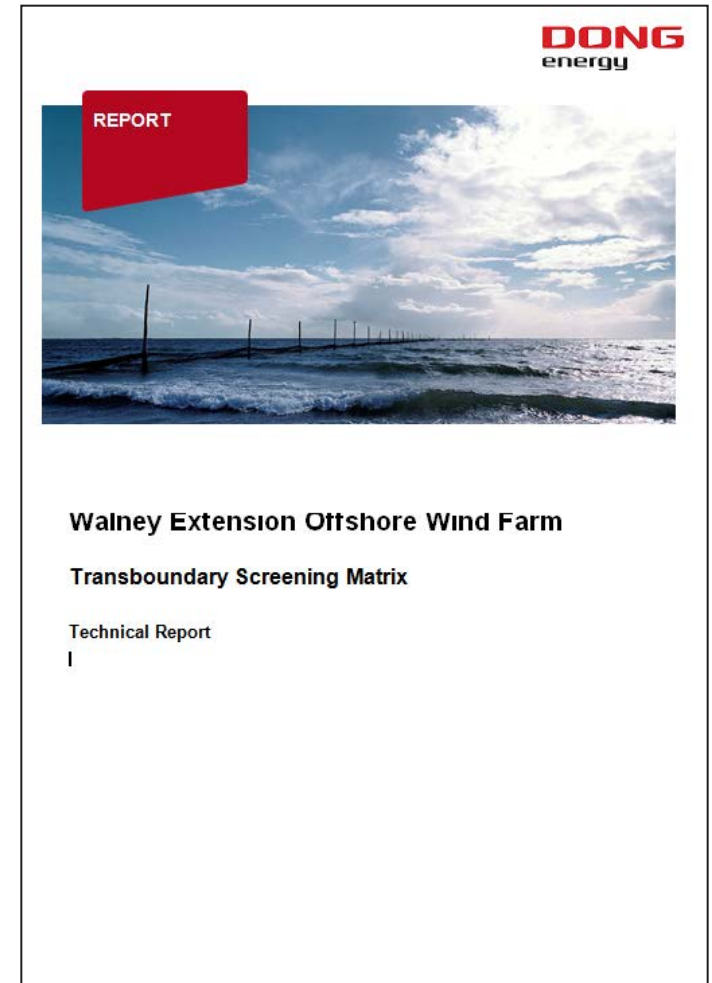
- Area to the NW of Walney Extension and NE of Celtic Array
- Cumulative assessment undertaken with Fleetwood Nautical Campus with methodology agreed by representatives of the operators.

- **Aviation**

- NERL Radar discussions underway with NATS on potential solutions
- MOD discussions on-going but difficult due to MOD Defence Estates resourcing

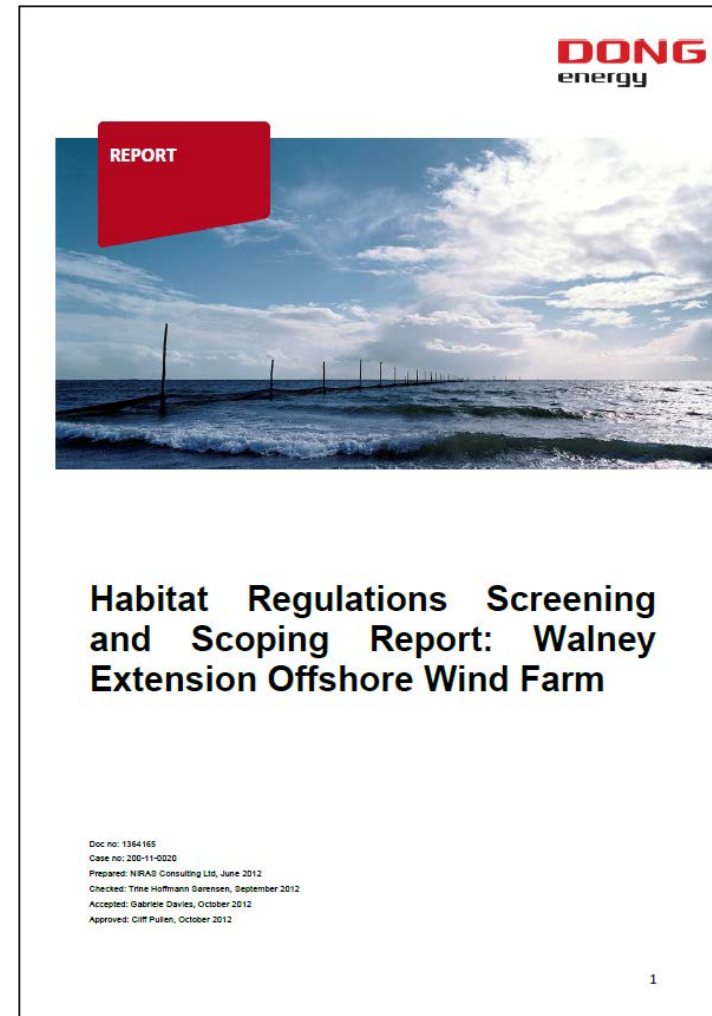
Walney Extension – Update on Trans boundary Screening Report

- **Screening report** is currently being prepared based on Advice note 12 version 3 (April 2012);
- PEI identified potential **transboundary stakeholders** in relation to Shipping and Navigation, Commercial Fisheries – consultation is ongoing;
- Potential impact on **offshore biological environment** is currently being assessed and will be followed by consultation with relevant parties;
- Report is expected to be finalised by the **end of the year**



Walney Extension – Update on HRA Screening Report

- Sent out to relevant stakeholders **26 October 2012**
- Responses expected by the end of **November 2012**
- Key points:
 - **Annex II fish species** are screened out
 - Potential impacts on **Morecambe Bay SAC** – further assessment will be undertaken (export cable laying)
 - **Offshore Ornithology** – further assessment will be undertaken (Wind farm site)
 - Migratory species – further assessment will be undertaken
 - Scope for assessment under the **Habitat Directive** to be discussed and agreed with SNCB's



Walney Extension – Consultation Update

Section 47 Second Round Community Consultation Events 3rd to 13th September 2012



Events in :

- Middleton Parish Hall – 59 Attendees
- Villa Marina, Douglas, Isle of Man – 157 Attendees
- The Forum, Barrow-in-Furness – 53 Attendees
- Millom Network Centre – 19 Attendees
- The Co-op Food Store, Egremont – 15 Attendees
- Walney Library – 8 Attendees
- The Winter Gardens, Blackpool – 25 Attendees

A Total of 336 Registered Attendees

Walney Extension – Consultation Update

Section 47 Second Round Community Consultation Events 3rd to 13th September 2012 Continued...

Documents available to attendees:

- Statement of Community Consultation
- 'Our Consultation Process' leaflet
- Preliminary Environmental Information (PEI)
- Preliminary Environmental Information Non-Technical Summary (PEI NTS)
- The 'Mini Consultation Report' on the first round of consultation events
- Community Newsletters 2 and 3
- FAQ leaflet

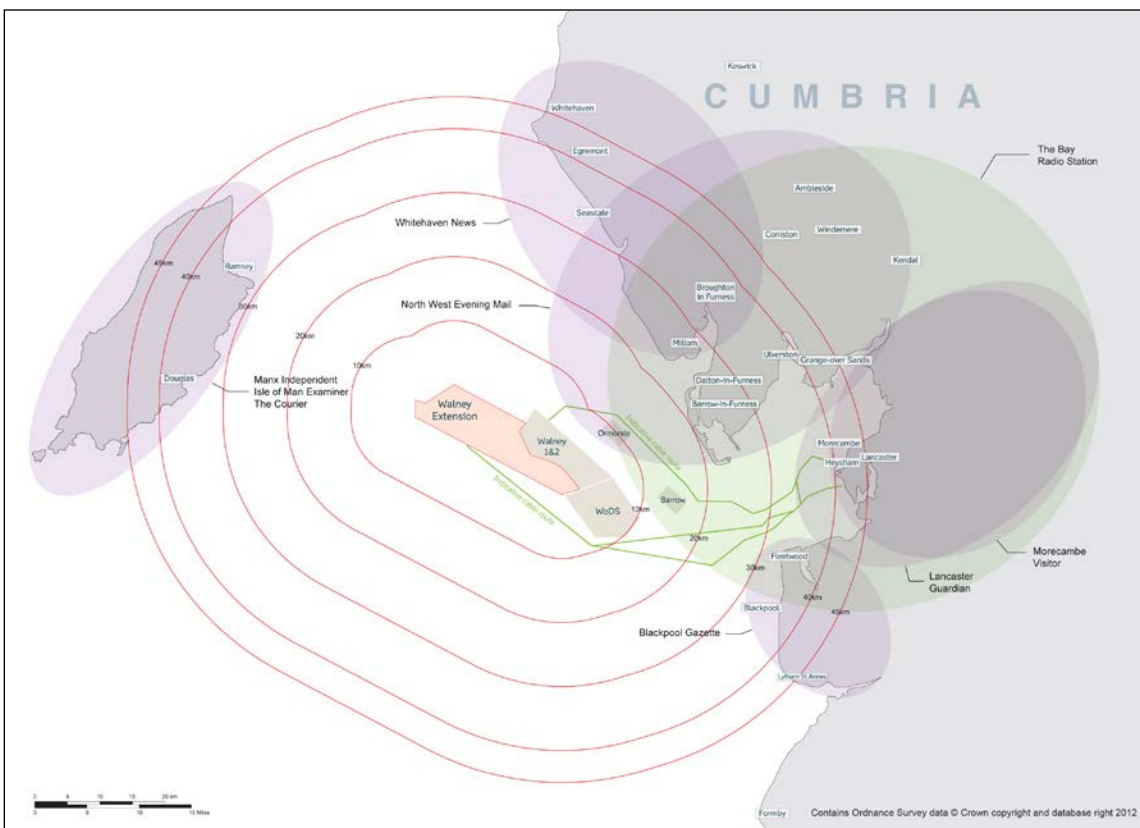


Supplemented at the main events by a four panel nomadic display providing non-technical details on the project, a three panel nomadic display detailing the consultation process, Two banners outlining the most popular Frequently Asked Questions banner, a stand providing headline information on the project, a short film played throughout the events which described how an offshore wind farm is constructed, a large maps of the cable corridors where consultees were encouraged to draw constraints, a 3D computer generated fly through of all potential wind farm scenarios and photomontages of the 3 different potential scenarios at strategic locations at all events.

Walney Extension – Consultation Update

Section 47 Second Round Community Consultation Events

3rd to 13th September 2012 Continued...



64% of attendees provided feedback on the project and event on the feedback forms provided.

Feedback is currently being analysed.

Initial findings from feedback forms indicate that 93% of attendees felt that the events had helped them understand the proposed plans for the wind farm, cable routes and onshore substation.

On-going analysis shows the impact on sea users to be the single most important overall issue to attendees via the feedback forms.

Walney Extension – Consultation Update

Planning Performance Agreement (PPA)

PPA due to be signed with:

- Cumbria County Council
- Lakeland District Council
- Copeland District Council
- Lancashire County Council
- Lancaster City Council

Regular dialogue with local authorities reviewing Technical reports and Draft ES

Local Impact Report (LIR) will be produced as a joint submission.

potential conflicts with the PURDAH during the examination and LIR submission

Walney Extension – Consultation Update

Indicative Time Schedules: Section 42, 44, 47 and 48

Section 48 – Notice was published in 12 newspapers throughout the consultation area and beyond during the W/C 27th August and detailed the period of between 3rd September 2012 until 23rd November 2012 as the consultation period

Section 42* – Responses to the PEI closed on 16th October. All responses to supplementary documents should be received by 4th December

Section 47 – Responses to PEI and supplementary documents will be received by 23rd November.

Section 44* - Owner identification is still underway, however the large majority of Section 44 consultees have had until the 16th October to respond to the PEI and until the 4th December to respond to the supplementary documents.

*subject to minor amendments

Walney Extension – PEI Responses

Published on 3rd September 2012

Summarises results of environmental surveys and details how we are going to address potential impacts in the Environmental Statement



A Preliminary Environmental Information Non Technical Summary (PEI NTS) was also published at the same time to ensure accessibility to all and better understanding.

CD's containing the reports were circulated to all identified Section 42 and Section 44 consultees and emails were sent containing the documents as attachments to all Section 47 consultees. Documents were also available on the Project website and at all consultation events. All consultees were invited to make comment to the publications

41 responses have been received to date

All responses are logged

Walney Extension – Programme for on going dialogue with Planning Inspectorate up to submission

Drafts to be completed and issued in advance of next meeting

- Envelope Document
- Consultation Report
- DCO Draft
- Explanatory Memorandum
- Structure of Environmental Statement
- HRA
- Safety Zone Statement
- Cable Installation Methodology
- Other Consents and Licences not enclosed within DCO

Walney Extension – Next Meeting and AOB

Project Team & Contact Details

Walney Extension Offshore Wind Farm

Trine Hoffman Sorensen – Consents Manager

Cliff Pullen – Project Developer

Jodie Hall – Stakeholder Co-ordinator

DONG Energy Walney Extension (UK) Ltd.

33 Grosvenor Place

Belgravia

London

SW1X 7HY

Tel: 0207 811 5439

Web: www.walneyextension.co.uk

E-mail: walneyextension@dongenergy.co.uk